

PRORIL

50Hz

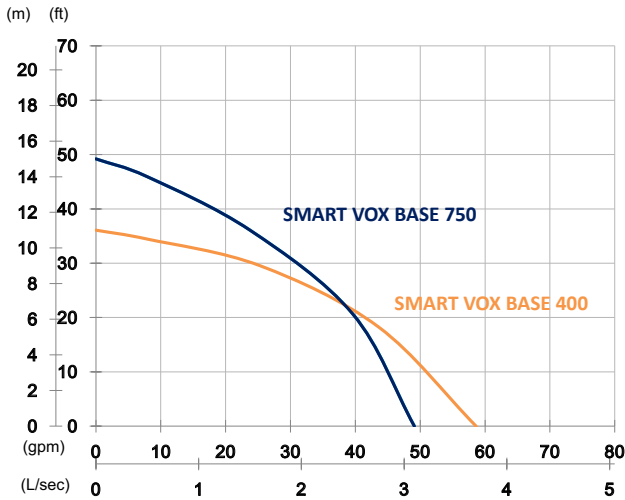
Designed for light weight, excellent performance, low energy consumption, and easy maintenance, PRORIL submersible handy pumps serve a wide range of pumping applications on utility, construction, industrial, and municipal job sites.

Handy and Residue Pump

SMART VOX BASE 400/750

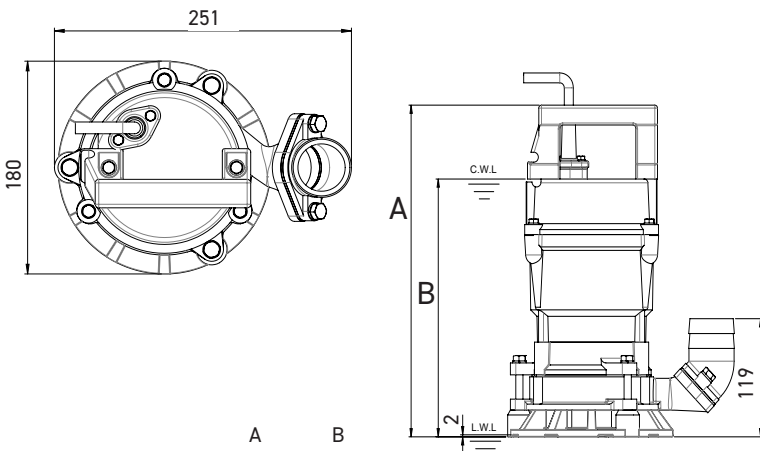
Residue Pump





| | SMART VOX BASE 400 | SMART VOX BASE 750 |
|---------------|--------------------------------|--------------------------------|
| OUTPUT | 0.4 kW (0.5 HP) | 0.75 kW (1 HP) |
| OUTLET | 2" (50 mm) | 2" (50 mm) |
| SOLID PASSAGE | 2 mm | 2 mm |
| Weight | 11.3 kg | 12.8 kg |
| HEAD | Rated: 8 m Max: 11 m | Rated: 11 m Max: 15 m |
| FLOW | Rated: 1.6 L/s Max: 3.8 L/s | Rated: 1.5 L/s Max: 3.1 L/s |

| | | |
|-----------------------------|---------------|---|
| Pump Type | | Electric Submersible Pumps |
| Motor | Phase | 1-Phase, 3-Phase |
| | Type | Induction Motor |
| | Poles | 2 Pole (2850 rpm) |
| | Insulation | Class F |
| | Protector | Miniature Thermal Protector Circle Thermal Protector |
| | Starter | 1-Phase · Capacitor-Run, 3-Phase · D.O.L |
| Lubricant | | Food Grade (ISO VG32) |
| Specs. | Impeller Type | Semi-Vortex |
| | Shaft Seal | Double Mechanical Seal |
| | | Silicon Carbide VS Ceramic/Carbon |
| | Bearings | C3 Shielded ball bearings |
| | Cable | H07RN-F |
| 10 m or longer upon request | | |
| Materials | Pump Casing | Gray Iron |
| | Impeller | Synthetic Polymers |
| | Motor Frame | Aluminum |
| | Motor Shaft | Stainless Steel |
| | Agitator | Stainless Steel |
| | Strainer | Synthetic Polymers |
| Max. Liquid Temperature | | 40°C (104°F) |
| Max. Submersion Depth | | 20 m (66 ft) |
| pH Range | | pH 5 - pH 8 |



| | A | B |
|--------------------|-----|-----|
| SMART VOX BASE 400 | 335 | 260 |
| SMART VOX BASE 750 | 362 | 287 |

unit : mm

C.W.L : Continuous running water level
L.W.L : Lowest running water level